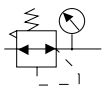


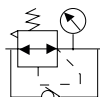


Symbol

No reflux valve is attached



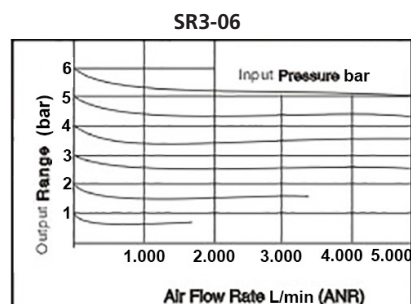
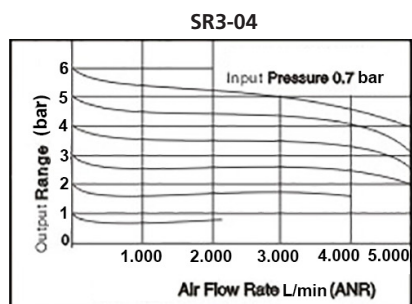
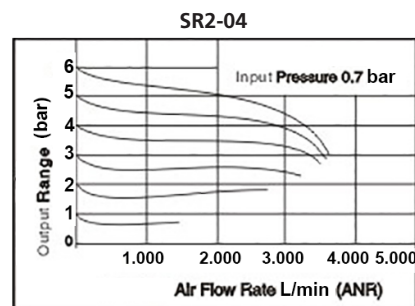
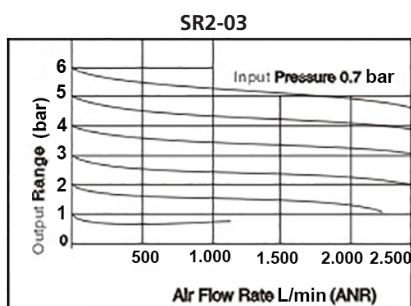
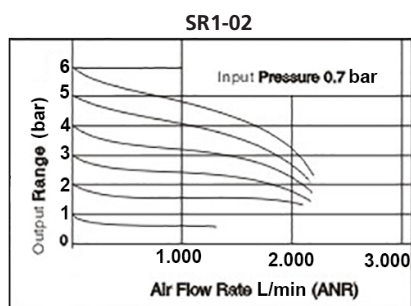
Reflux valve is attached



Product feature

1. Embedded square pressure gauge is used to save installation space. (External circular pressure gauge is also optional).
2. The pressed-in self-locking mechanism can prevent the abnormal movement of the set pressure caused by external interfering;
3. Balanced design is adopted for the pressure adjustment mechanism.
4. Easy installation in panels;

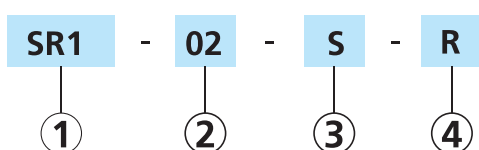
Pressure and feature of flow



Specification

Model	SR1-02	SR2-03	SR2-04	SR3-04	SR3-06
Fluid	Air				
Port size	1/4"	3/8"	1/2"	1/2"	3/4"
Pressure range	0.5 ~ 9 bar(7~130Psi)				
Proof pressure	15 bar(215 Psi)				
Temperature range	-20~70°C				

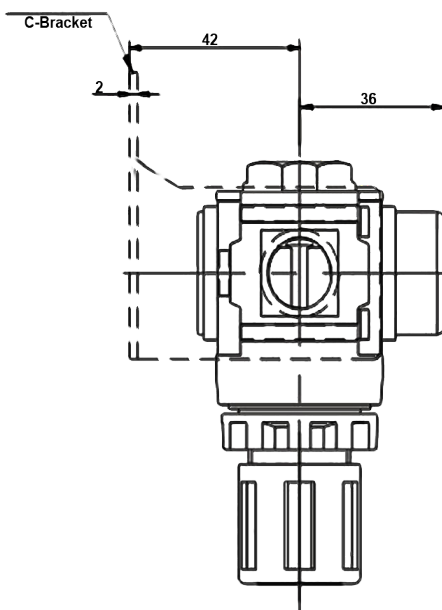
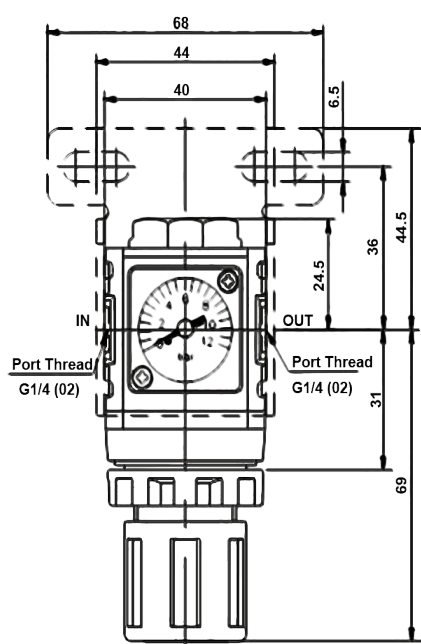
Ordering code



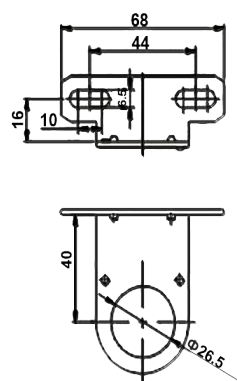
① Model	-	② Port Size	-	③ Pressure gauge	-	④ Reflux valve
SR1: R unit		02: 1/4"		Blank: No gauge		Blank: No reflux
SR2: R unit		03: 3/8"		S: Square		R: Reflux valve
		04: 1/2"		C: Circular		
SR3: R unit		04: 1/2"		D: Digital		
		06: 3/4"				

Dimensions

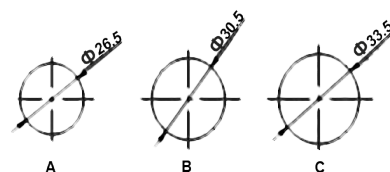
SR1



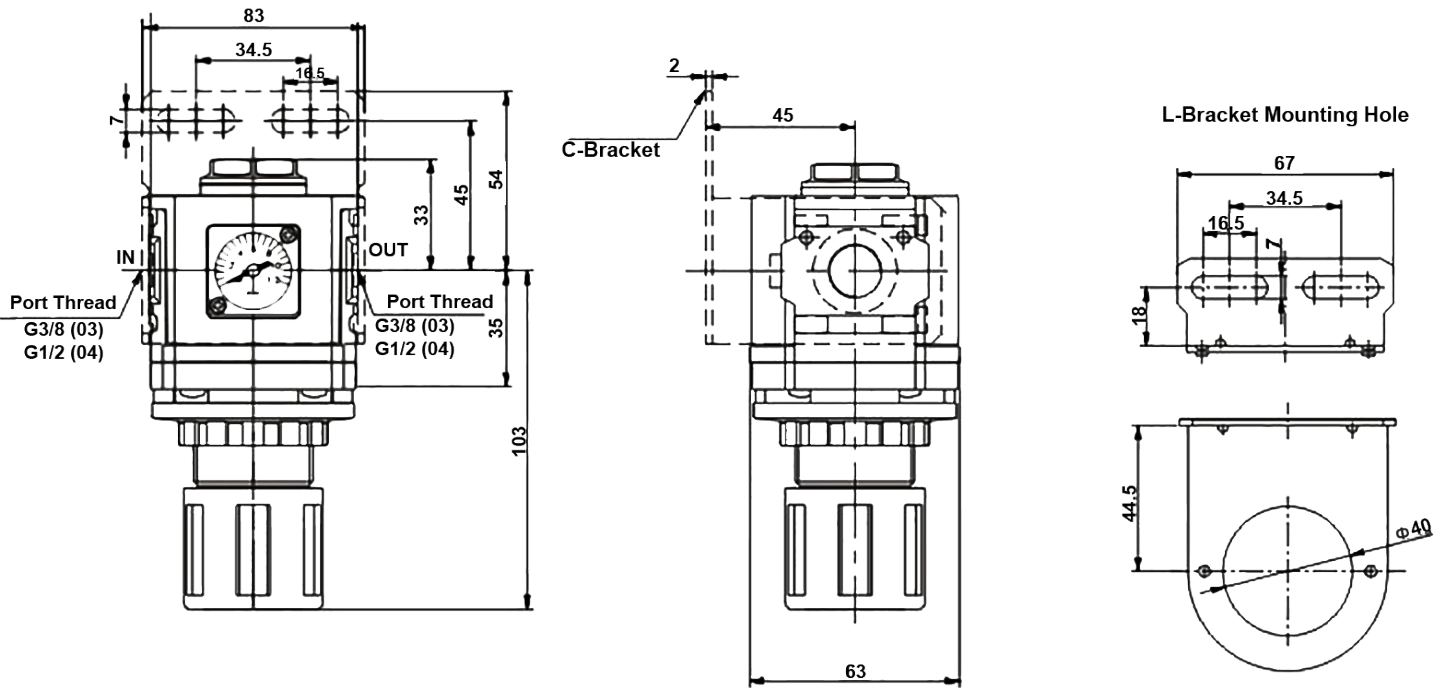
L-Bracket Mounting Hole



Kneading board



SR2



SR3

